

# The Neighborhood Booklet – Philadelphia and the Pennsylvania Suburbs



Welcome to the guide designed to support Fox Chase Cancer Center employees and trainees with every day “need-to-knows” in Philadelphia and Pennsylvania. This comprehensive guide will provide recommendations for where to shop, historic attractions to visit, places to have fun, and so much more!

For additional support, contact:

Brianna Amato

[Brianna.Amato@fccc.edu](mailto:Brianna.Amato@fccc.edu)

Science Program Recruitment Administrator

Table of Contents

**Introduction to Popular Philadelphia Neighborhoods** **Pages 3 - 8**

***Some Surrounding Pennsylvania Suburbs*** **Pages 8 - 10**

**Grocery Stores in Pennsylvania** **Pages 11 - 12**

- Unique Stores
- Popular Chain Grocery Stores
- Ethnic Grocery Stores around the Area

**Other Common Stores to Know** **Page 12**

**Amusement Parks** **Page 13**

**Additional Fun Attractions** **Page 14**

## Introduction to Popular Philadelphia Neighborhoods

### Rittenhouse Square



Rittenhouse Square is known for the most popular one-square-block park in the city. It hosts festivals, farmers' markets, and many other enjoyed events throughout the year. It is also surrounded by high-end restaurants, housing, and shops. Walnut Street is considered the Rittenhouse Row shopping district that includes designer stores and local boutiques. Rittenhouse is a short walk from Suburban Station and 30<sup>th</sup> Street Station.

Popular Dining & Recommendations: The Parc, The Love, Continental Midtown, Barclay Prime

### Old City



Old City holds 18<sup>th</sup>-Century's charm as it is next to Independence Mall, where the country's Founding Fathers declared liberty. It is popular for its cobblestone streets filled with small shops, cafes, and unique restaurants.

Historic Attractions: Independence National Historic Park, Liberty Bell Center, Elfreth's Alley, The Betsy Ross House, American Philosophical Society

Popular Dining & Recommendations: Talulas Garden, Zahav, The Han Dynasty, The Franklin Fountain

## East Passyunk



East Passyunk is one of the few diagonal streets in Philadelphia and has stood out for its indie boutiques, bars, cafes, and overall walkability. It is home for the famous Pat's King of Steaks and Geno's Steaks.

Popular Dining & Recommendations: Barcelona, Laurent

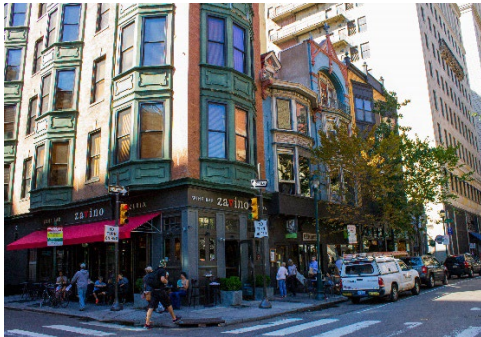
## Fishtown



Fishtown has lots of soul with its rich artistry, musical talent, and entertainment. This area has become a popular place to live as it serves as one of the newer, exciting neighborhoods in Philadelphia.

Popular Dining & Recommendations: Loco Pez

## Midtown Village & The Gayborhood



Midtown village is in the direct middle of center city, between Old City and Rittenhouse Square. This area is very popular for dining and clubs even holding many hot spots for the LGBTQ+ community. The annual Pride Parade is held in this area as well as the Philadelphia OutFest.

Popular Dining & Recommendations: The Continental Mid-town, Vedge, El Vez, Fork

## University City



University City, in West Philadelphia, is prestigious because it is the home of the University of Pennsylvania and Drexel University. It includes the medical cluster of Drexel Medicine, Penn Medicine, and the Children's Hospital of Philadelphia. This area is bustling with youth and innovation.

Popular Dining & Recommendations: The White Dog Café, La Scalas Fire, Louie Louie

## Chinatown



The heart of Asian culture in Philadelphia, Chinatown has a wide selection of authentic Asian cuisine, shops, and seasonal festivals. Chinatown is one of the most lively areas of Philadelphia including specialty dessert shops, a variety of Korean barbecue, karaoke bars, and so much more.

Popular Dining & Recommendations: Dim Sum Garden, Mango Mango, Prince Tea House

## Logan Square



You have to visit Logan Square for its luxury architecture and green spaces, it makes for a great walk on a nice day. It starts with City Hall, the hub of Philadelphia's government, and stretches to the Philadelphia Museum of Art and Schuylkill River walk.

Historic Attractions: The Franklin Institute, Barnes Foundation, Free Library of Philadelphia, and the Rodin Museum. This area is also known as "The Benjamin Franklin Parkway."

## **Penn's Landing**



This area is near the Delaware River waterfront, holding lots of history including William Penn's arrival to Philadelphia. Penn's Landing has stunning open spaces with events hosted all year long. It's most popular events include the RiverRink Winterfest and Summerfest. Penn's Landing is the place to admire the waterfront, especially with exciting restaurants like the Moshulu.

Popular Dining & Recommendations: The Moshulu, Independence Seaport Museum, Cherry Street Pier and Race Street Pier

## **Manayunk**



This suburban-urban neighborhood is on the outskirts of Philadelphia, being one of the most popular places to live. Its main street has plenty of bars, restaurants, and local shops. This neighborhood is located right near the beautiful Schuylkill River and has its own train station for easy access to center city.

Popular Dining & Recommendations: SOMO Manayunk, Winnie's Manayunk, Couch Tomato Café

## South Philadelphia Sports Complex



Philadelphia is a proud sports city, being the home of the Lincoln Financial Field for the Philadelphia Eagles (football), the Citizens Bank Park for the Phillies (Major League Baseball), and the Wells Fargo Center for the 76ers (basketball) and Flyers (hockey). The South Philadelphia Sports Complex is where fans can find these stadiums, being easily accessible from the NRG Station subway stop.

## Some Surrounding Pennsylvania Suburbs

### Fox Chase



About: The Fox Chase neighborhood is a part of Philadelphia County and on the border of Montgomery County. Many use the Fox Chase Train station to get to and from Philadelphia. It is home of the largest business facility in the area, Fox Chase Cancer Center.

Historical Landmarks: The Verree House, Ryers Mansion

Attractions: Pennypack Park



## King of Prussia



About: King of Prussia is in Montgomery County and is on the edge of Philadelphia. It is popular for its large retail space, with the 5<sup>th</sup> largest mall in America, as well as a great town for business since it is in the middle of four major highways.

Historical Landmarks: Valley Forge National Historical Park

Attractions: King of Prussia Mall, KOP Town Center, Jenkins Arboretum & Gardens

Driving Distance from Fox Chase: 36 minutes

## Doylestown



About: Doylestown is the governmental center of Bucks County and is a vibrant town full of rich history, business, museums, and restaurants. It has been recognized as having one of the best small cultural communities in America.

Historical Landmarks: Fonthill Castle, Pearl S. Buck House, Michener Art Museum

Attractions: Wander Main Street, Buckingham Valley,

Driving Distance from Fox Chase: 45 minutes

## Harrisburg



About: Harrisburg is the capital of Pennsylvania and one of the most populated cities in Pennsylvania. Harrisburg sits along the Susquehanna River, with history dating back to 3000 BC. There's a lot to see and enjoy in the state's capital, making it a great place to visit.

Historical Landmarks: Pennsylvania State Capitol Complex, Fort Hunter Mansion and Park, Susquehanna Riverboat, Pennsylvania National Fire Museum

Attractions: National Civil War Museum, State Museum of Pennsylvania, City Island, Whitaker Center for Science and Arts

Driving Distance from Fox Chase: 1 hour, 50 minutes

## Newtown, Yardley, & Washington Crossing



About: Newtown, Yardley, and Washington Crossing are three neighborhoods close to each other that offer a wide selection of restaurants, shops, fun places to visit, and historical landmarks.

Historical Landmarks: Shady Brook Farm, Garden of Reflection 9/11 Memorial, Washington Crossing Historic Park

Attractions: The Yardley Borough & Canal, Newtown Main Street, Tyler State Park, Newtown Arts Center, Grounds for Sculpture

Driving Distance from Fox Chase: 40 - 45 minutes

## Grocery Stores in Pennsylvania

### Unique Stores

#### **Trader Joe's**

#### **TRADER JOE'S**

Trader Joe's is one of the most popular grocery stores in Pennsylvania since it offers a unique selection of freshly prepared foods, snacks, frozen meals, and bakery items. It has many staples that people run to and avid "Trader Joe's fans."

#### **Wawa**



Wawa originated in Pennsylvania, and you'll find that people from different states have never heard of Wawa. There are 253 Wawas in Pennsylvania making it an easy place to stop into on the road for a quick bite. Many of the Wawas also have a gas station.

#### **Whole Foods**



Whole Foods is a higher-end grocery chain in Pennsylvania that offers many organic, healthy choices. It is in the name to provide quality products free from hydrogenated fats, artificial colors, and preservatives.

#### **Wegmans**



Wegmans is a private regional supermarket that is very popular due to having one of the larger inventories. It also has a unique bakery and overall shopping experience.

## Popular Chain Grocery Stores

These common grocery stores are found in all of Pennsylvania with hundreds of locations. They are convenient because of their product base, unique prepared meals, bakeries, and affordable prices.

**Giant**



**ShopRite**



**McCaffrey's**



**Aldi**



**Acme**



## Ethnic Grocery Stores around the Area

**HMart (Korean Market)**



**NetCost (Eastern European supermarket)**



**Khamarbari Super Market (Bangladeshi)**

**1<sup>st</sup> Oriental Supermarker (Asian Supermarket)**

**Pinoy Groseri (Filipino Grocery Store)**

**Other Common Stores to Know**

**Amazon (Largest Online Retailer)** *Everyone uses Amazon to buy everything! You need this!*

**Staples & Office Depot (Business Essentials)**

**Best Buy (Electronics and Appliances)**

**Willow Grove Mall (Closest Recommended Mall from Fox Chase)**

**TJ Maxx (Affordable Trendy Clothing)**

## Amusement Parks

### **Hershey Park**



Hershey Park is located in Hershey, PA and is known as one of the cleanest and greenest family fun parks in Pennsylvania. This theme park was founded after Milton S. Hershey created the Hershey multinational chocolate brand.

Driving Distance from Fox Chase: 1 hour, 57 minutes

### **Six Flags Great Adventure**



Six Flags has 27 parks in the United States and is known to have some of the largest rollercoaster rides. The Kingda Ka is the tallest roller coaster in the world at 456 feet and second-fastest. The closest Six Flags is in Ocean County, New Jersey.

Driving Distance from Fox Chase: 1 hour, 2 minutes

### **Dorney Park & Wildwater Kingdom**



Dorney Park is another amusement and water park that features a variety of roller coasters, thrill rides, and water rides. It is operated by Six Flags.

Driving Distance from Fox Chase: 1 hour, 7 minutes

## Additional Fun Attractions

### **The Philadelphia Zoo**

Who doesn't love a good zoo? The [Philadelphia Zoo](#) is the main one of the area. It is home to over 1,500 animals and has been around for over 100 years.

Location: Centennial District of Philadelphia, 3400 W Girard Ave

### **Adventure Aquarium**

If you want to go to an aquarium, many go to the [Adventure Aquarium](#) in Camden, New Jersey. It has a vast number of underwater creatures including penguins, sharks, and hippos.

Location: 1 Riverside Drive, Camden NJ (*40-minute drive from Fox Chase*)

### **Escape Room**

An Escape Room experience is a popular game in which you and your friends try to accomplish challenges together to escape a room before the time limit runs out. Escape rooms often have different themes, making each visit different.

Location: Multiple in Philadelphia

### **Longwood Gardens**

[Longwood Gardens](#) is public garden of more than 1,000 acres full of beautiful views and meadows, being one of the best in the United States. It is absolutely worth a visit, and includes special displays during the holidays.

Location: 1001 Longwood Rd, Kennett Square (*1-hour drive from Fox Chase*)

### **Peddler's Village**

[Peddler's Village](#) is a historic village with gardens, local shops, and a variety of dining options. It is a great place to walk around and enjoy seasonal events.

Location: Routes 202 and 263, Lahaska PA (*45-minute drive from Fox Chase*)

### **“The Shore”**

When someone says they are going “down the shore”, it often means they are taking a trip to one of the surrounding beach towns. People usually go down for a day or a weekend, and you will definitely need a car for this.

Locations: Ocean City NJ, Ocean City Maryland, Wildwood NJ, Seaside Heights NJ